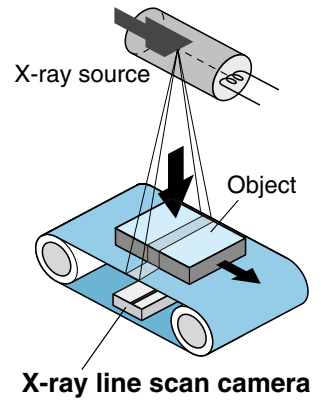


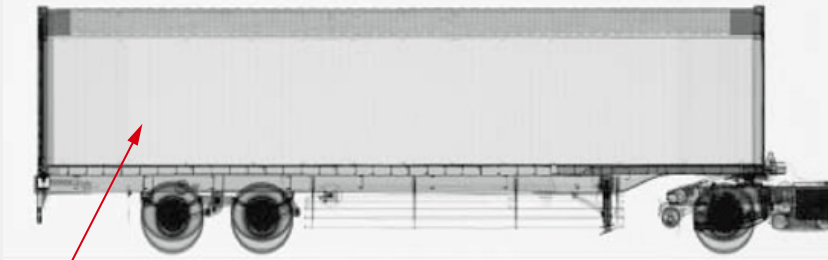
# Application Note : 3

**X-ray**  
line scan camera

**Security**



## Cargo inspection (High power X-ray application)

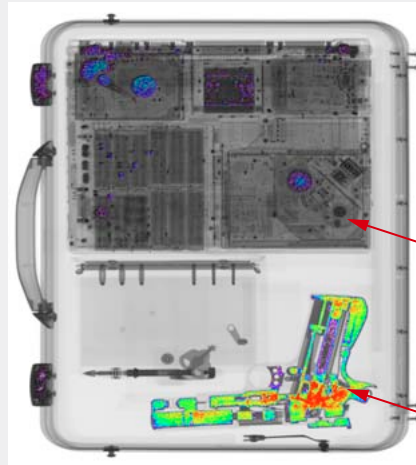


The line scan camera is capable of imaging large objects such as truck cargo inspection since custom-made cameras with a wider field of view are available on request.



3000 mm effective area  
with 1.6 mm sensor

## Baggage inspection



The camera can detect different metal materials within bags and it allows even more accurate identification during baggage/luggage inspection.

Laptop PC

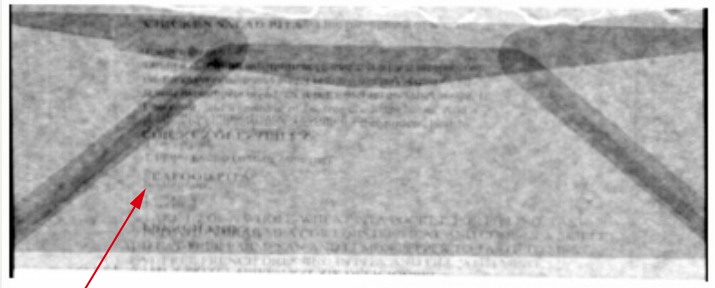
Gun \*The photo is a model gun.

## Envelope inspection (Low power X-ray application)



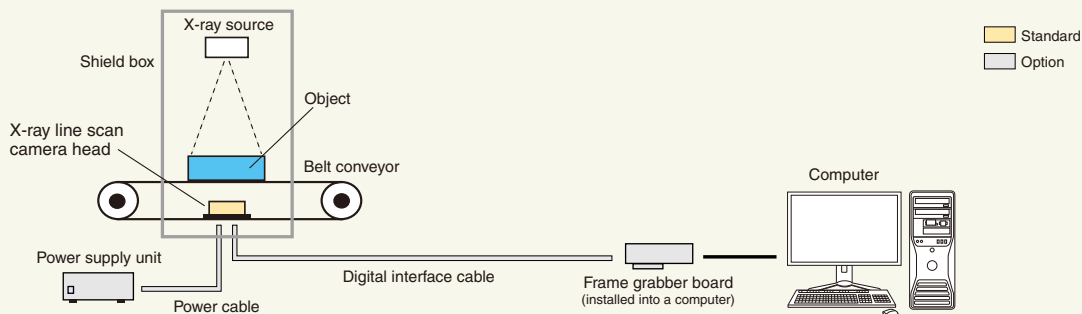
Using a low-energy compatible camera makes it possible to read characters on letters folded in three within an envelope.

This processes large volumes of letters at high speed since the camera captures images while objects are moving along conveyor line.



Possible to read the letter inside the envelop

### System configuration



#### Note

- The X-ray line scan camera consists of only a sensor head. The image display equipment and the X-ray source should be ordered separately.
- The power supply unit, digital interface cable, computer, X-ray source are necessary. Please consult your local sales representative about connector formats.

★ Product and software package names noted in this documentation are trademarks or registered trademarks of their respective manufacturers.

- Subject to local technical requirements and regulations, availability of products included in this promotional material may vary. Please consult your local sales representative.
- Information furnished by HAMAMATSU is believed to be reliable. However, no responsibility is assumed for possible inaccuracies or omissions. Specifications and external appearance are subject to change without notice.
- Please note the X-Ray images on this brochure are taken for test purpose, the images do not reflect actual qualities of the products on the market.

© 2015 Hamamatsu Photonics K.K.

**HAMAMATSU PHOTONICS K.K.** [www.hamamatsu.com](http://www.hamamatsu.com)

**HAMAMATSU PHOTONICS K.K., Systems Division**

**812 Joko-cho, Higashi-ku, Hamamatsu City, 431-3196, Japan, Telephone: (81)53-431-0124, Fax: (81)53-435-1574, E-mail: export@sys.hpk.co.jp**

**U.S.A.:** Hamamatsu Corporation: 360 Foothill Road, Bridgewater, N.J 08807, U.S.A., Telephone: (1)908-231-0960, Fax: (1)908-231-1218 E-mail: usa@hamamatsu.com

**Germany:** Hamamatsu Photonics Deutschland GmbH.: Arzbergerstr. 10, D-82211 Herrsching am Ammersee, Germany, Telephone: (49)8152-375-0, Fax: (49)8152-265-8 E-mail: info@hamamatsu.de

**France:** Hamamatsu Photonics France S.A.R.L.: 19, Rue du Saule Trapu, Parc du Moulin de Massy, 91882 Massy Cedex, France, Telephone: (33)1 69 53 71 00, Fax: (33)1 69 53 71 10 E-mail: infos@hamamatsu.fr

**United Kingdom:** Hamamatsu Photonics UK Limited: 2 Howard Court, 10 Tewin Road, Welwyn Garden City, Hertfordshire AL7 1BW, UK, Telephone: (44)1707-294888, Fax: (44)1707-325777 E-mail: info@hamamatsu.co.uk

**North Europe:** Hamamatsu Photonics Norden AB: Torshamnsgatan 35 16440 Kista, Sweden, Telephone: (46)8-509-031-00, Fax: (46)8-509-031-01 E-mail: info@hamamatsu.se

**Italy:** Hamamatsu Photonics Italia S.r.l.: Strada della Moia, 1 int. 6 20020 Arese (Milano), Italy, Telephone: (39)02-93581733, Fax: (39)02-93581741 E-mail: info@hamamatsu.it

**China:** Hamamatsu Photonics (China) Co., Ltd.: B1201 Jiaming Center, No.27 Dongsanhuan Beiliu, Chaoyang District, Beijing 100020, China, Telephone: (86)10-6586-6006, Fax: (86)10-6586-2866 E-mail: hpc@hamamatsu.com.cn

Cat. No. SFAS0009E04  
JUL/2015 HPK  
Created in Japan